



# AMEL 50

Year 2019

 **DIAMOND**

DIAMOND Yachts, Yachtzentrum Baltic Bay  
Börn 17 | 24235 Laboe

# AMEL 50


**SOLD**
**1.100.000,00 €**

EU-VAT paid

## Main Info

<b>Model</b>	AMEL 50
<b>Manufacturer</b>	Chantiers AMEL S.A. (FRA)
<b>Designer</b>	AMEL Design Group
<b>Category</b>	Bluewater cruiser
<b>Year</b>	2019
<b>Location</b>	Camargue/Frankreich
<b>Flag</b>	France
<b>VAT status</b>	EU-VAT paid
<b>Material</b>	GRP
<b>Rig</b>	Sloop with furling mast
<b>Cabins</b>	3
<b>Berths</b>	6

## Dimensions & Material

<b>LOA</b>	16.50 m
<b>LWL</b>	14.50 m
<b>Beam</b>	4.79 m
<b>Draft</b>	2.15 m
<b>Displacement</b>	23 t
<b>Sail area</b>	126 m <sup>2</sup>
<b>Engine</b>	VOLVO PENTA D3-150
<b>Power</b>	150 PS/110 KW
<b>Drive</b>	Shaft with VARIPROP
<b>Fresh water</b>	600 L
<b>Fuel</b>	650 L
<b>Holding tank</b>	160 L

## Key Facts

- Electric davits and dinghy.
- Retractable bowthruster.
- Electric furling mast.
- Airconditioning.
- Engine upgrade VOLVO 150 hp.
- Diesel generator ONAN 8 KW.
- Watermaker 100 l/h.
- Fixed doghouse.

## Description

Luxurious and seaworthy bluewater cruiser from France fully equipped for circumnavigation. Her proven concept, the high standard of boatbuilding in the shipyard in La Rochelle and the focus on safety, reliability and comfort make AMEL sailing yachts legendary vessels for long distance cruising and you meet them in the most remote areas of the world. Very rigid, torsion-free construction using vinylester resins with laminated bulkheads. Deep, well-protected cockpit with fixed doghouse above the helm station. Bright and modern interior with plenty of light and air below decks through numerous large hull ports and coachhouse windows, eight deck hatches and seven portholes. The AMEL 50 was elected "European Yacht of the Year 2018" in the category luxury cruiser. Very well equipped owner's yacht, ready for worldwide cruising. The extensive specification includes an 8 kW diesel generator, watermaker, air conditioning, washing machine, electric winches, electric davits with a 3,10-meter dinghy, STARLINK satellite internet antenna, and much more. Upgraded, powerful VOLVO PENTA D3-150 engine with a stronger 45 mm shaft and a VARIFOLD folding propeller. Thanks to the electric genoa furling system, self-tacking jib with electric furler, and electric furling mainsail with electric outhaul, this AMEL 50 is suitable for single-handed sailing. The modern, exclusive interior is finished in satin varnished American walnut, with white-covered panels, light laminated floorboards, and numerous ...

## Rig/Sails

- Deck-stepped, top-rigged AMEL furling mast
- Two sets of aft-swept spreaders
- Electric mainsail furling system and electric outhaul
- Rig painted white
- Electric genoa furling system PROFURL
- Fixed cutter stay with electric furling system PROFURL
- Spinnaker pole (stowed on mast)
- Gennaker/spinnaker gear
- Dyneema/Vectran halyards
- LED deck lights on mast
- LED spreader lights
- LED cockpit light in boom
- LED 3-colour light and anchor light in top
- Two halyard winches HARKEN 40.2ST on mast
- Dinghy crane integrated in main boom
- Furling mainsail INCIDENCES Hydranet triradial approx. 62 m<sup>2</sup> with UV-protection
- Furling genoa INCIDENCES Hydranet triradial approx. 64 m<sup>2</sup> with UV-protection
- Self tacking jib INCIDENCES Hydranet triradial approx. 24 m<sup>2</sup> with UV-protection
- Furling gennaker INCIDENCES approx. 180 m<sup>2</sup> with furling system

## Deck

- Stainless steel bowsprit for gennaker/code-0 with integrated anchor roller
- Electric anchor windlass LEWMAR V5 2.000 W with remote control and chain counter in cockpit
- Mooring gear: Stainless steel DELTA-anchor 32 kg and 100 m anchor chain 10 mm
- Continuous fixed stainless steel guardrail with railing gates to starboard and port
- Integrated teak seats in pushpit
- Four stainless steel mooring cleats
- Four stainless steel spring cleats
- Electric genoa winches HARKEN 60.2STE
- Secondary winches HARKEN 46.2ST
- Electric mainsheet winch HARKEN 46.2STE
- Large sail locker below foredeck with storage for fenders, mooring lines and sails
- Large lazarette below aft deck
- Deep, well protected cockpit with helm station and helm seat to port
- Doghouse with windscreen (central opening window), two hatches in roof, overhead lighting and retractable GRP bimini
- Aft and side panels for bimini (cockpit enclosure)
- Electro-hydraulic folding swim platform with wireless remote control
- Blue LED lighting at stern
- Swim ladder
- Stern shower hot/cold
- Electric davits
- Folding cockpit table in teak and stainless steel

## Interior/Layout

- Generous saloon with U-shaped dinette to port
- Folding saloon table with two additional sliding seats
- L-shaped settee to starboard
- Forward facing chart table with navigator seat to port aft
- Longitudinal galley in passage to aft cabin to starboard
  - Worktop in white CORIAN
  - Double sink
  - Microwave with grill 230 V
  - Refrigerator 125 l with 2 drawers
  - Freezer below saloon sofa
  - Dishwasher
  - Nespresso coffee machine
  - Gas stove (3 burners and oven)
  - Ample storage in lockers, cupboards and drawers
- Luxurious, spacious owner's cabin aft with wide island double berth, settee and vanity table, ample storage in lockers, compartments, shelves and below the berth, that can be folded up by help of gas struts
- Owner's heads compartment with separate shower and electric toilet to port
- Guest cabin forward with island double berth
- Second heads compartment with separate shower and electric toilet to port
- Lateral cabin to starboard with double bunk beds
- Exclusive, well finished, light-coloured interior in satin-varnished American walnut with white-covered panels, laminated floorboards and numerous leather applications
- Leecloths for berths
- OCEANAIR blinds and mosquito screens in deck hatches
- Blinds for hull and coachhouse windows
- LED interior lighting (ceiling spotlights, indirect lighting and reading lamps)

## Technical Equipment

- VOLVO PENTA D3-150 5 cylinder inboard diesel 150 hp/110 KW (engine upgrade, standard engine at the time was VOLVO PENTA D3-110)
- Engine hours (as of February 2025): 845 h
- EVC-system with electronic throttle
- Hydraulic gearbox
- Shaft drive system 45 mm with flexible coupling AQUADRIE, 4-blade VARIFOLD folding propeller and line cutter on propeller shaft
- Large, easily accessible and very well sound insulated engine compartment
- Retractable bow thruster SIDEPOWER 24 V/8 hp
- Sound insulated 3 cylinder diesel generator ONAN 8 KW (operating hours as of February 2025: 165 h)
- 230 V shore power connection with charging cable
- Battery charger MASTERVOLT 24 V/100 A
- Second battery charger MASTERVOLT 24 V/60 A
- Gel service battery bank 24 V/600 Ah (all batteries new 2025)
- Starter battery 12 V for engine and generator
- 230 V and 12 V/USB-sockets in interior
- Air conditioning for saloon and all cabins
- LG washing machine with dryer
- Watermaker DESSALATOR dual voltage 24 V/230 V/100 l/h (operating hours as of February 2025: 65 h)
- Two electric toilets each with holding tank 80 l with deck connection and sea discharge
- Hot water boiler 50 l
- LED navigation lights
- LED interior lighting

## Navigation/Electronics

- BROOKS [&] GATEHOUSE Hydra 5000 system
- 3 x B[&]G H5000 GFD display in cockpit and 1 x H5000 GFD display at chart table
- Analogue B[&]G wind display in cockpit
- Autopilot FURUNO Navpilot 711C
- 15" multifunction display FURUNO Navnet TZT2 at helm station
- GPS-receiver FURUNO GP330
- Radar antenna on first spreader
- AIS Class B-transponder FURUNO FA50
- Compass
- Video camera in mast
- VHF-radio GARMIN 215
- TV LCD screen 40" with electric lift in saloon, TV antenna and separate inverter 24 V/230 V/800 W
- TV LCD screen 28" in aft cabin
- Marine entertainment system FUSION Apollo SRX770 with two speakers in saloon and two cockpit speakers
- Router World Pepwave WIFI 3G/4G with receiver and amplifier
- STARLINK internet satellite antenna (new 2023)

## Safety

- Watertight collision bulkhead between sail locker and forward cabin
- The AMEL 50 can be divided into five watertight sections to prevent water ingress
- Life raft VIKING 8 pers. in container at pushpit
- EPIRB
- Fire extinguisher
- Fire extinguishing system in engine compartment
- Safety ladder and two steps on outside of swim platform
- Electric and manual bilge pumps
- Safety equipment



### Accessories

---

- Dinghy: HIGHFIELD RIB 3,10 m with 10 hp HONDA 4-stroke outboard engine
- Folding carbon fibre gangway 2,60 m
- Cockpit cushions
- Sunbathing cushions for aft deck
- Sunbathing cushions for foredeck
- Sun awning for main boom
- Sun protection covers for windscreen
- Protection covers for console, steering wheel, helm seat, companionway, cockpit table and instruments
- Fenders
- Mooring lines

---

#### Brokerage Liability Disclaimer

All information especially regarding the VAT-status of a yacht has been supplied by third parties. It is non-binding and without guarantee, subject to error and alteration. Our brokerage relies exclusively on information supplied by the vendor carefully compiled and checked by us to the best of our knowledge. Hence, a liability for correctness and completeness of provided information cannot be assumed.

## IMAGES





## IMAGES



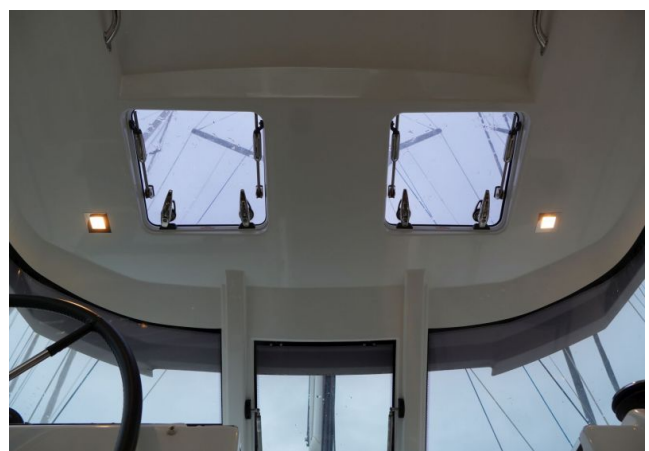


## IMAGES





## IMAGES





## IMAGES





## IMAGES





## IMAGES

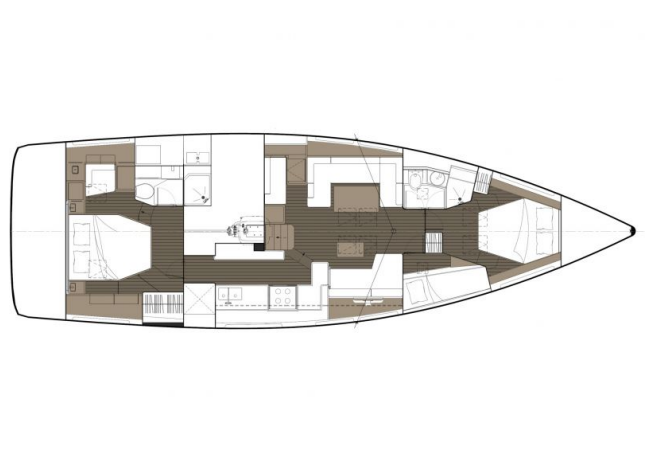
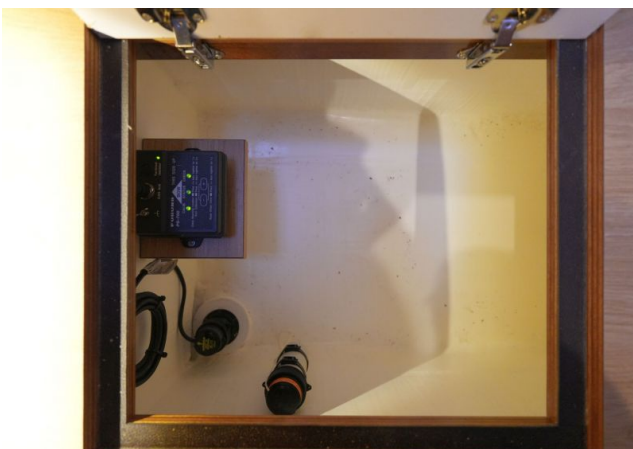


## IMAGES

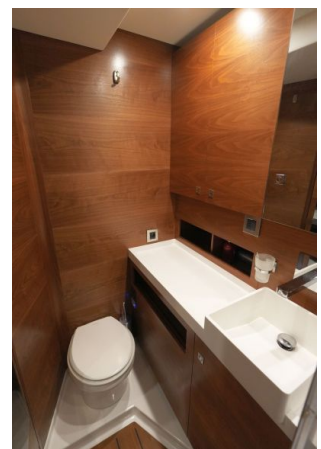
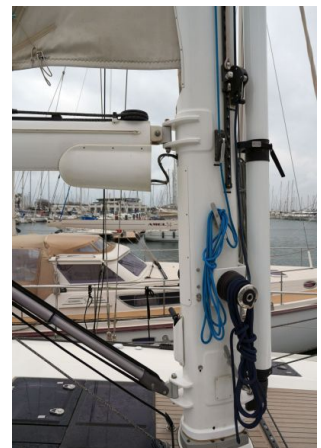
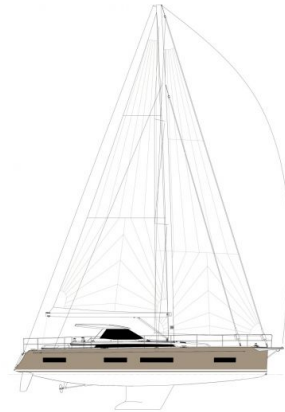
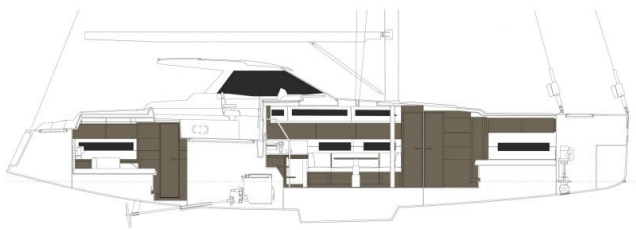




## IMAGES



## IMAGES



## IMAGES

